



Report No.: BLC1906012E-J

LM-79-08 Test Report

For

LED One Corporation

(Brand Name: LED ONE)

45885 Hotchkiss St Fremont, CA 94539 USA

Outdoor Pole/Arm-Mounted Area and Roadway Luminaires

Model name(s): LOC-LWAL-80WXXKD-YLV-MZ

Remark: "XX" represents different CCT, can be 40=4000K, 50=5000K, 57=5700K. "Z" stands for sensors options, can be "D" or "N" to represent sensor or None sensor. "R" represents mounting options, can be S=Slip Fitter Arm, E=Extruded Arm, M=Surface mounting Arm, F=Slip Fitter+ E=Extruded Arm.

Representative (Tested) Model:

LOC-LWAL-80W40KD-T3LV-MZ

Model Different: All construction and rating are the same, except CCT

Test & Report By:

Sherry Yang

Engineer: Sherry Yang

Date: Jun.11, 2019

Review By:

Jason Luo

Manager: Jason Luo



1.1 Product Information:

Organization Name	LED One Corporation	
Brand Name	LED ONE	
Model Number	LOC-LWAL-80WXXKD-T3LV-MZ	
SKU (if available)	N/A	
Type of Luminaire (for integral lamps, list base type and lamp type)	Outdoor Pole/Arm-Mounted Area and Roadway Luminaires	
Rated Voltage / Frequency	120-347Vac, 50/60Hz	
Nominal Power	80W	
Rated Initial Lamp Lumen	--	
Declared CCT	4000K,5000K,5700K	
Sample Number	BLC1906012E-J1(4000K)	
Luminaire Aperture (for downlights)	--	in.
Luminaire Length	--	mm
Luminaires Width	--	mm
Number of Units (modular products)	N/A	s

Photo





1.2 Test Specifications:

Date of Receipt	June 05, 2019
Date of Test	June 06, 2019
Test item	<ol style="list-style-type: none">1. Total Luminous Flux2. Luminous Distribution Intensity3. Luminous Efficacy4. Correlated Color Temperature5. Color Rendering Index6. Chromaticity Coordinate7. Electrical Parameters
Reference Standard	<ol style="list-style-type: none">1. IES LM-79-2008 Electrical and Photometric Measurements of Solid-State Lighting Products2. ANSI C78.377-2008 Specifications for the Chromaticity of Solid State Lighting Products3. CIE 13.3-1995 Method of Measuring and Specifying Colour Rendering Properties of Light Sources4. CIE 15-2004 Technical Report Colorimetry5. IESNA LM-16-93 Practical Guide to Colorimetry of Light Source6. IESNA TM-16-05 Technical Memorandum on Light Emitting Diode (LED) Sources and Systems
Reference Work Instruction	BL-QP-033

1.3 Test Methods

1) Photometric and Light Distribution Measurement – Goniophotometer Method:

Photometric parameters were measured using the goniophotometer and software. The ambient temperature shall be maintained at $25^{\circ}\text{C} \pm 1^{\circ}\text{C}$, measured at a point not more than 1 m from the sample and at the same height as the sample. The sample was operated at 120 or rated Volts AC, 60Hz. It was stabilized before measurement was made. Luminous flux, luminaire efficacy, zonal lumen were calculated from the software taken at 1° vertical intervals and 22.5° horizontal intervals.

2) Chromaticity Measurement – Sphere-Spectroradiometer Method:

Chromaticity parameters were measured using an integrating sphere, a spectroradiometer and software. The ambient temperature condition inside the sphere was maintained at $25^{\circ}\text{C} \pm 1^{\circ}\text{C}$. The sample measurements were made using a spectroradiometer connected by a fiber optic cable and detector through the detector port of the integrating sphere. The sample was operated at 120 or rated Volts AC, 60Hz. It was stabilized before measurement was made. Chromaticity coordinates, correlated color temperature and color rendering index were calculated from the spectral power distribution taken at 5 nm intervals over the range of 380 to 780 nm.

3) Electrical Measurements:

Electrical parameters were measured using power meters incorporated in goniophotometer or sphere-spectroradiometer system. The ambient temperature surrounding the sample was maintained at $25^{\circ}\text{C} \pm 1^{\circ}\text{C}$. The sample was operated at 120 or rated Volts AC, 60Hz. It was stabilized before measurement was made. Voltage, frequency, current, power, power factor and total harmonic distortion were measured by and read from the power meter.

**2.1 Electrical, Photometric and Chromaticity Measurements***(Refer to Work Instruction BL-QP-033)*

Test date	2019-06-06	Test Ambient:	25.2 ° C
Test Orientation	As intended	Stabilization Time (min)	90
Model Number	LOC-LWAL-80W40KD-T3LV-MZ		

Electrical Measurement:

Sample No.	Voltage (Vac)	Frequency (Hz)	Current (A)	Power (W)	Power Factor	THD %
BLC190601	120.0	60	0.6587	78.96	0.999	3.36
2E-J1	347.0	60	0.2468	83.23	0.972	9.03
DLC Pass Criteria					>= 0.9(-3%)	<= 20(+5)

Photometric Measurement – Goniophotometer Method:

Parameter	Result		DLC V4.4 Pass Criteria
Test Voltage (V)	120.0	347.0	--
Frequency (Hz)	60	60	--
Total Luminous (lm)	11393.6	11725.4	>=10000 (-10%)
Luminous Efficacy (lm/W)	144.30	140.88	Premium:>= 120 (-3%)
Most worst Luminous/Highest Watts	136.89		
Zonal lumens in the 0-90° zone (%)	99.7		>=100(-1)
Zonal lumens in the 80-90° zone (%)	0.7		≤10(+3)
Beam Angle (°)	136.7		--
Center Beam Candle Power (cd)	4346		--



Zonal Lumen Tabulation

Zonal Lumen Summary

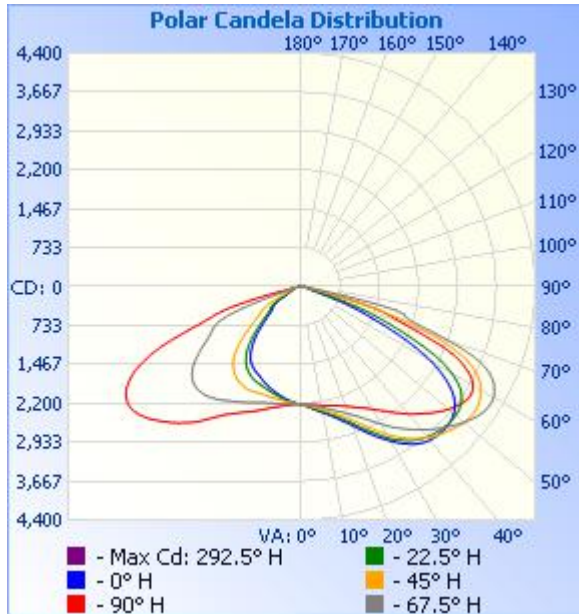
Zone	Lumens	% Lamp	% Luminaire
0-30	2,062.2	18.1%	18.1%
0-40	3,841.9	33.7%	33.7%
0-60	8,570.4	75.2%	75.2%
60-90	2,786.0	24.5%	24.5%
70-100	763.9	6.7%	6.7%
90-120	13.9	0.1%	0.1%
0-90	11,356.4	99.7%	99.7%
90-180	36.4	0.3%	0.3%
0-180	11,392.8	100%	100%

Lumens Per Zone

Zone	Lumens	% Total	Zone	Lumens	% Total
0-10	214.9	1.9%	90-100	3.9	0%
10-20	664.2	5.8%	100-110	4.2	0%
20-30	1,183.1	10.4%	110-120	5.8	0.1%
30-40	1,779.7	15.6%	120-130	6.5	0.1%
40-50	2,259.7	19.8%	130-140	5.7	0%
50-60	2,468.7	21.7%	140-150	4.7	0%
60-70	2,026.1	17.8%	150-160	3.3	0%
70-80	683.7	6.0%	160-170	1.8	0%
80-90	76.2	0.7%	170-180	0.6	0%

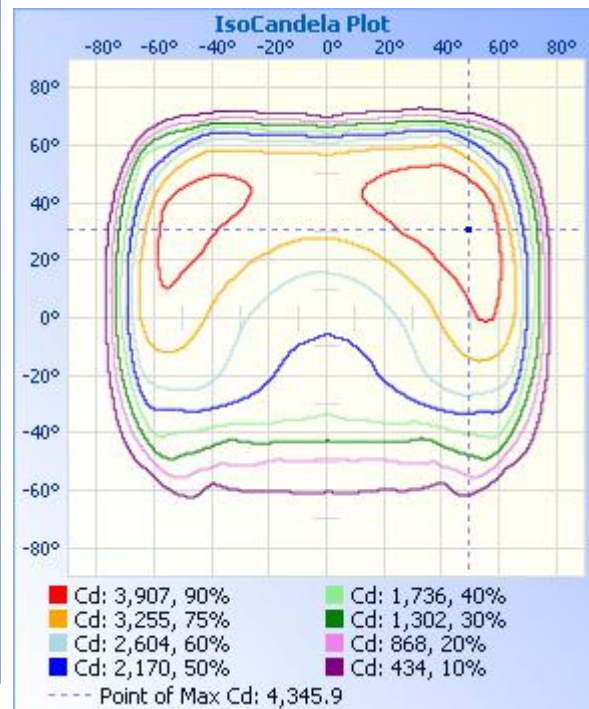
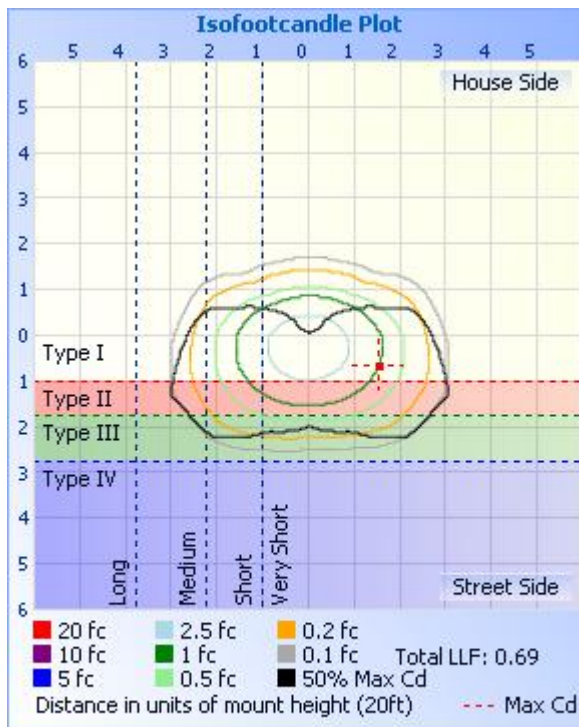


Photometric Data



	Center Beam fc	Beam Width	
17.0ft	7.69 fc	36.8 ft	85.7 ft
34.0ft	1.92 fc	73.6 ft	171.5 ft
51.0ft	0.85 fc	110.4 ft	257.2 ft
68.0ft	0.48 fc	147.3 ft	343.0 ft
85.0ft	0.31 fc	184.1 ft	428.7 ft
102.0ft	0.21 fc	220.9 ft	514.5 ft

■ Vert. Spread: 94.6°
■ Horiz. Spread: 136.7°





Report No.: BLC1906012E-J

Candela Table - Type C

	0	22.5	45	67.5	90	112.5	135	157.5	180	202.5	225	247.5	270	292.5	315	337.5	360
0	2223	2223	2223	2223	2223	2223	2223	2223	2223	2223	2223	2223	2223	2223	2223	2223	2223
1	2234	2235	2230	2225	2223	2217	2217	2214	2211	2214	2217	2221	2222	2228	2236	2235	2234
2	2249	2246	2238	2231	2226	2212	2210	2204	2202	2205	2212	2220	2219	2234	2244	2248	2249
3	2267	2258	2246	2237	2230	2209	2205	2198	2195	2202	2207	2221	2219	2246	2260	2264	2267
4	2285	2275	2258	2243	2233	2207	2203	2192	2185	2193	2200	2224	2226	2258	2274	2284	2285
5	2307	2291	2271	2252	2232	2206	2200	2184	2172	2186	2193	2224	2234	2270	2290	2303	2307
6	2327	2311	2287	2260	2236	2205	2198	2176	2163	2180	2187	2227	2242	2285	2310	2325	2327
7	2348	2331	2305	2271	2243	2206	2191	2165	2149	2170	2184	2228	2251	2299	2331	2346	2348
8	2371	2352	2324	2282	2254	2207	2188	2156	2136	2161	2180	2233	2263	2318	2352	2374	2371
9	2393	2374	2341	2298	2262	2209	2184	2146	2123	2150	2175	2239	2276	2341	2374	2398	2393
10	2418	2397	2360	2316	2277	2212	2181	2131	2108	2142	2172	2245	2290	2359	2400	2425	2418
11	2443	2421	2381	2333	2286	2215	2176	2118	2094	2127	2170	2251	2305	2377	2427	2452	2443
12	2471	2448	2402	2351	2294	2218	2171	2107	2080	2111	2167	2255	2317	2401	2450	2483	2471
13	2500	2474	2431	2372	2305	2222	2167	2094	2066	2099	2167	2259	2334	2421	2479	2512	2500
14	2533	2503	2458	2392	2313	2230	2159	2081	2050	2088	2165	2263	2350	2449	2507	2543	2533
15	2567	2532	2486	2415	2326	2235	2155	2069	2035	2077	2164	2270	2372	2473	2536	2577	2567
16	2607	2565	2516	2439	2336	2245	2153	2055	2020	2068	2160	2279	2394	2497	2569	2611	2607
17	2647	2601	2545	2465	2348	2253	2152	2042	2003	2058	2158	2289	2417	2526	2602	2652	2647
18	2690	2643	2581	2488	2361	2257	2151	2034	1987	2046	2156	2301	2442	2555	2638	2692	2690
19	2735	2684	2616	2517	2380	2263	2152	2023	1970	2038	2156	2314	2463	2586	2677	2740	2735
20	2781	2730	2659	2546	2399	2271	2155	2011	1953	2027	2157	2327	2489	2624	2721	2787	2781
21	2831	2779	2703	2581	2415	2280	2155	2000	1937	2016	2158	2340	2514	2660	2768	2839	2831
22	2889	2832	2748	2614	2438	2291	2157	1990	1918	2011	2160	2353	2537	2698	2827	2892	2889
23	2945	2890	2797	2650	2462	2306	2160	1977	1901	2000	2166	2370	2562	2738	2888	2952	2945
24	3005	2944	2851	2687	2487	2319	2162	1966	1884	1997	2171	2390	2584	2783	2953	3021	3005
25	3064	3000	2910	2731	2518	2332	2166	1955	1864	1989	2176	2410	2611	2833	3024	3087	3064
26	3127	3056	2967	2780	2542	2349	2166	1946	1850	1981	2181	2427	2642	2898	3103	3152	3127
27	3183	3114	3029	2830	2568	2362	2168	1935	1837	1971	2185	2444	2674	2963	3172	3218	3183
28	3240	3180	3089	2880	2597	2379	2169	1926	1822	1960	2184	2462	2704	3025	3247	3293	3240

Laboratory: Belling Test Laboratory Co., LTD A2LA Certificate# 4810.01
Unit 401, No. 309 Xinxin Seven Road, Zengcheng District,
Guangzhou, People' s Republic of China. Website: <http://www.blst.com>

Report Format Number BL-FM-SA-012



Certificate#4810.01

29	3301	3239	3151	2934	2630	2394	2167	1916	1809	1947	2179	2482	2740	3095	3321	3356	3301
30	3360	3298	3215	2989	2667	2411	2166	1901	1791	1929	2170	2505	2778	3162	3392	3422	3360
31	3417	3356	3275	3044	2708	2431	2164	1887	1772	1909	2163	2524	2817	3233	3461	3487	3417
32	3476	3405	3331	3103	2746	2449	2160	1870	1757	1892	2157	2543	2867	3297	3535	3548	3476
33	3529	3452	3387	3157	2788	2467	2155	1853	1736	1871	2148	2563	2922	3360	3602	3604	3529
34	3576	3500	3437	3211	2828	2485	2145	1831	1709	1843	2138	2586	2977	3420	3661	3654	3576
35	3622	3542	3490	3263	2880	2506	2133	1801	1678	1814	2123	2609	3038	3484	3722	3706	3622
36	3665	3581	3540	3313	2927	2525	2118	1767	1637	1781	2106	2635	3102	3542	3774	3753	3665
37	3699	3616	3582	3364	2981	2545	2103	1727	1596	1746	2082	2655	3169	3606	3823	3792	3699
38	3732	3645	3628	3420	3028	2564	2083	1691	1549	1703	2057	2673	3233	3659	3880	3827	3732
39	3753	3671	3670	3470	3078	2580	2057	1649	1499	1658	2031	2691	3292	3711	3921	3860	3753
40	3773	3697	3711	3519	3133	2597	2024	1600	1443	1606	2002	2710	3345	3765	3961	3878	3773
41	3786	3715	3750	3569	3183	2611	1990	1547	1384	1550	1968	2728	3398	3822	3994	3898	3786
42	3795	3732	3781	3619	3229	2623	1952	1491	1315	1489	1931	2738	3457	3873	4030	3916	3795
43	3801	3743	3812	3668	3270	2633	1909	1423	1248	1416	1883	2745	3507	3921	4063	3926	3801
44	3805	3757	3841	3718	3319	2639	1853	1357	1173	1346	1834	2750	3558	3968	4088	3936	3805
45	3808	3770	3865	3763	3371	2645	1798	1284	1100	1269	1776	2751	3604	4014	4115	3938	3808
46	3807	3778	3892	3806	3422	2643	1737	1211	1028	1192	1709	2751	3654	4052	4143	3941	3807
47	3794	3785	3920	3852	3469	2642	1666	1129	960	1116	1628	2746	3703	4091	4162	3943	3794
48	3782	3792	3942	3895	3512	2632	1591	1059	896	1036	1552	2735	3749	4136	4181	3943	3782
49	3765	3791	3969	3938	3559	2620	1505	990	841	968	1472	2716	3796	4171	4198	3934	3765
50	3740	3784	3988	3981	3600	2601	1428	930	788	908	1394	2691	3835	4203	4206	3925	3740
51	3708	3778	4005	4021	3638	2571	1350	877	747	854	1307	2659	3872	4236	4218	3919	3708
52	3668	3767	4017	4057	3669	2534	1276	823	715	804	1233	2620	3904	4265	4213	3900	3668
53	3617	3745	4023	4096	3705	2488	1206	781	691	761	1163	2575	3926	4292	4212	3880	3617
54	3549	3719	4024	4125	3737	2437	1139	750	674	732	1098	2523	3944	4313	4206	3853	3549
55	3473	3683	4018	4152	3760	2374	1075	727	656	710	1036	2456	3951	4331	4199	3813	3473
56	3375	3636	4008	4172	3780	2311	1019	704	637	689	988	2388	3947	4342	4183	3764	3375
57	3263	3576	3992	4183	3787	2242	973	681	609	664	945	2318	3930	4346	4162	3711	3263
58	3136	3497	3967	4190	3781	2173	932	646	566	628	904	2244	3903	4342	4133	3639	3136
59	2992	3388	3937	4192	3761	2105	889	596	504	578	866	2164	3863	4334	4100	3541	2992
60	2838	3277	3898	4179	3726	2032	847	532	440	514	830	2093	3808	4313	4056	3418	2838

Laboratory: Belling Test Laboratory Co., LTD A2LA Certificate# 4810.01
Unit 401, No. 309 Xinxin Seven Road, Zengcheng District,
Guangzhou, People' s Republic of China. Website: <http://www.blst.com>

Report Format Number BL-FM-SA-012



Certificate#4810.01

61	2640	3133	3858	4152	3680	1973	803	459	384	449	774	2028	3735	4283	4009	3281	2640
62	2425	2974	3806	4114	3614	1920	740	400	340	385	708	1971	3650	4240	3954	3116	2425
63	2194	2767	3733	4071	3519	1869	650	355	304	340	624	1916	3546	4176	3892	2920	2194
64	1946	2521	3648	4012	3408	1830	552	321	276	309	530	1874	3407	4091	3817	2699	1946
65	1704	2273	3544	3925	3277	1793	460	297	250	289	434	1830	3245	3993	3718	2444	1704
66	1447	2038	3417	3819	3108	1750	385	282	236	275	365	1774	3077	3862	3610	2178	1447
67	1238	1801	3245	3674	2886	1694	337	270	225	261	322	1699	2852	3693	3474	1939	1238
68	1052	1549	3044	3478	2583	1593	305	256	217	249	297	1578	2562	3486	3267	1688	1052
69	830	1320	2805	3205	2313	1452	288	241	210	237	281	1416	2277	3232	3042	1462	830
70	446	1087	2536	2895	2071	1255	276	228	202	225	271	1188	2025	2908	2774	1214	446
71	244	863	2247	2582	1880	1021	266	216	194	213	262	927	1841	2622	2486	970	244
72	179	571	1971	2285	1734	764	254	202	186	200	253	638	1709	2369	2149	712	179
73	154	356	1595	2104	1554	530	242	189	179	186	241	449	1553	2188	1785	455	154
74	145	226	1186	2033	1279	384	230	175	171	174	228	330	1328	2127	1392	267	145
75	138	181	804	1993	919	305	216	163	163	161	217	273	1000	2104	995	194	138
76	120	169	494	1830	625	268	199	151	156	149	203	248	711	1968	670	171	120
77	102	154	318	1404	404	250	182	141	150	140	188	238	443	1541	419	160	102
78	90	131	197	827	258	236	164	132	144	131	169	230	269	982	243	139	90
79	82	109	161	448	187	224	148	123	138	122	153	219	189	561	159	116	82
80	74	94	142	241	150	214	128	114	131	113	136	205	146	343	134	100	74
81	66	83	122	166	126	197	111	106	124	105	119	185	124	231	123	88	66
82	56	73	106	131	106	179	94	96	117	96	103	164	108	168	109	78	56
83	52	67	92	118	87	157	76	86	109	88	86	141	93	127	96	72	52
84	42	49	79	118	67	129	62	76	99	77	69	115	78	101	84	55	42
85	33	37	67	108	53	95	49	67	87	68	55	84	62	85	71	41	33
86	25	34	54	89	40	59	38	59	71	60	44	57	49	70	58	34	25
87	18	21	40	65	27	32	28	49	56	52	32	36	37	55	46	25	18
88	10	13	29	40	14	17	18	38	41	40	23	22	26	37	36	15	10
89	5	8	18	24	4	8	10	25	25	27	15	14	15	22	25	9	5
90	4	6	13	11	3	3	4	12	10	15	7	6	6	11	12	6	4
91	4	5	8	7	3	3	2	1	2	3	4	4	4	6	7	4	4
92	4	4	6	5	3	3	2	2	2	2	4	4	4	5	5	4	4

Laboratory: Belling Test Laboratory Co., LTD A2LA Certificate# 4810.01
Unit 401, No. 309 Xinxin Seven Road, Zengcheng District,
Guangzhou, People' s Republic of China. Website: <http://www.blst.com>

Report Format Number BL-FM-SA-012



Report No.: BLC1906012E-J

93	3	3	5	5	3	3	2	2	2	2	3	4	4	4	5	4	3
94	4	3	5	5	3	2	2	2	2	2	3	4	3	5	4	3	4
95	3	3	5	5	2	3	2	2	2	2	3	3	3	5	4	4	3
96	3	3	5	5	2	3	2	2	2	2	4	4	3	4	4	4	3
97	3	3	3	5	2	3	2	2	2	2	3	4	4	4	4	4	3
98	2	3	3	4	2	4	3	2	2	2	3	4	4	4	4	3	2
99	2	2	3	5	2	4	3	2	2	2	3	4	3	4	3	3	2
100	2	2	3	4	3	4	3	2	2	2	4	4	4	4	2	3	2
101	3	2	4	4	3	4	4	2	2	3	5	5	4	4	3	3	3
102	2	2	3	4	3	4	5	3	2	3	5	5	4	4	3	2	2
103	2	2	3	4	3	4	5	4	2	2	7	5	4	3	3	2	2
104	2	2	3	4	3	5	6	4	3	3	7	6	5	4	3	2	2
105	2	2	3	4	4	5	6	5	3	3	7	5	4	3	3	2	2
106	2	3	3	4	4	6	7	4	3	4	7	7	5	4	3	2	2
107	2	2	3	4	4	6	8	4	3	4	7	7	5	3	3	2	2
108	2	1	4	5	4	6	8	5	4	5	7	7	5	4	2	2	2
109	1	2	4	5	5	6	8	6	4	5	7	8	6	4	2	2	1
110	2	3	4	5	6	6	8	6	4	6	7	9	6	4	3	2	2
111	2	3	4	5	6	7	8	6	4	6	8	8	7	4	3	2	2
112	2	2	4	5	7	7	9	6	4	7	8	9	7	4	2	2	2
113	2	2	4	6	6	7	9	7	4	7	8	9	8	4	2	2	2
114	2	2	4	6	6	8	9	7	5	6	9	9	8	4	3	2	2
115	2	2	4	6	7	9	8	7	5	8	9	9	7	5	2	2	2
116	2	2	3	7	9	9	8	8	5	7	9	9	8	5	3	3	2
117	2	3	4	7	10	9	8	8	5	7	9	9	9	4	3	2	2
118	2	3	4	7	11	9	8	8	6	7	9	8	9	5	3	1	2
119	2	2	4	7	11	10	9	8	6	7	10	8	10	5	3	2	2
120	2	3	5	7	12	10	9	8	6	8	10	8	10	6	3	2	2
121	2	3	5	8	12	10	9	8	6	8	9	9	10	6	3	2	2
122	3	2	3	8	12	9	9	8	6	8	9	9	11	7	3	2	3
123	2	3	5	8	12	10	10	8	7	8	9	9	11	7	3	3	2
124	2	3	5	9	12	8	9	9	7	8	9	9	11	8	3	2	2

Laboratory: Belling Test Laboratory Co., LTD A2LA Certificate# 4810.01
Unit 401, No. 309 Xinxin Seven Road, Zengcheng District,
Guangzhou, People' s Republic of China. Website: <http://www.blst.com>

Report Format Number BL-FM-SA-012



Report No.: BLC1906012E-J

125	3	3	3	9	14	10	9	8	7	8	9	10	11	8	4	3	3
126	3	3	5	10	13	9	10	8	7	8	8	10	12	9	3	3	3
127	2	4	5	10	13	10	8	7	6	8	8	10	12	9	4	3	2
128	3	4	5	10	13	9	8	8	7	7	7	10	12	9	4	3	3
129	3	4	6	10	13	9	8	8	6	7	8	10	12	9	4	3	3
130	3	3	5	10	13	9	7	7	7	7	7	10	12	9	4	3	3
131	4	4	5	10	12	9	8	8	6	7	8	10	11	9	4	3	4
132	3	4	6	11	12	9	8	7	8	7	7	9	12	10	4	3	3
133	3	4	5	10	11	9	7	8	8	8	8	9	11	9	4	3	3
134	2	4	6	10	12	9	7	7	7	8	8	9	11	9	4	3	2
135	4	4	5	10	11	8	8	7	7	7	8	9	11	10	5	3	4
136	4	4	6	10	11	8	8	8	8	8	8	9	11	10	3	3	4
137	3	4	6	9	11	8	7	8	7	8	9	9	11	10	5	3	3
138	4	4	6	9	10	8	8	8	7	8	8	9	10	10	5	4	4
139	4	5	7	9	10	8	8	8	8	8	8	9	10	10	5	3	4
140	4	5	7	9	9	7	8	8	7	7	8	9	10	10	5	4	4
141	4	5	7	9	8	7	9	8	7	8	8	9	10	10	6	4	4
142	4	5	7	9	8	7	9	8	8	8	9	9	10	10	6	3	4
143	4	5	7	9	8	7	8	8	7	8	8	9	9	10	6	4	4
144	5	5	7	9	8	7	8	8	8	8	8	9	9	10	6	4	5
145	5	5	8	9	8	8	8	8	8	8	8	9	10	10	6	5	5
146	5	5	7	9	8	7	8	8	8	8	9	8	9	10	6	5	5
147	5	6	8	9	8	7	8	8	8	8	9	8	9	10	7	5	5
148	5	6	7	9	8	7	8	8	8	8	8	9	8	9	5	5	5
149	5	6	8	8	8	7	8	8	8	8	8	9	8	9	6	5	5
150	4	5	7	9	8	7	8	8	7	7	8	8	8	9	6	4	4
151	5	6	8	9	8	6	8	7	8	8	8	9	8	9	7	5	5
152	4	6	8	9	8	7	7	8	8	7	9	8	8	9	7	6	4
153	3	6	8	8	8	7	8	7	8	8	8	9	8	9	7	6	3
154	5	7	8	8	7	7	7	8	8	7	8	8	8	8	7	6	5
155	6	6	8	9	7	7	8	7	8	7	8	8	7	8	6	6	6
156	4	6	8	8	7	7	7	7	7	7	8	8	7	8	7	6	4

Laboratory: Belling Test Laboratory Co., LTD A2LA Certificate# 4810.01
Unit 401, No. 309 Xinxin Seven Road, Zengcheng District,
Guangzhou, People' s Republic of China. Website: <http://www.blst.com>

Report Format Number BL-FM-SA-012



Report No.: BLC1906012E-J

157	5	6	8	8	7	7	7	7	7	8	7	8	7	8	7	6	5
158	5	6	7	8	6	7	7	7	7	7	7	7	7	8	6	6	5
159	6	6	7	8	6	7	7	7	8	7	8	7	6	6	7	6	6
160	5	6	7	7	6	6	7	6	7	7	8	7	7	7	7	6	5
161	6	6	7	8	6	7	7	6	7	7	8	7	6	7	6	6	6
162	6	6	7	7	6	6	7	8	8	7	8	7	6	7	7	5	6
163	5	4	8	7	6	7	7	7	7	7	7	7	5	6	6	6	5
164	5	5	7	7	5	6	7	7	7	7	7	7	6	7	6	5	5
165	6	5	7	7	6	6	7	7	7	7	7	7	5	6	6	4	6
166	6	6	7	6	5	6	7	7	6	7	7	7	6	6	6	6	6
167	5	6	7	7	5	6	7	7	7	7	7	7	5	6	5	6	5
168	6	6	7	7	6	7	7	6	7	7	8	7	6	6	5	6	6
169	6	6	7	7	5	6	7	7	7	7	7	7	5	6	6	6	6
170	6	6	7	6	4	6	7	7	7	7	7	7	5	6	6	6	6
171	6	6	7	6	5	6	7	6	7	7	7	7	5	5	5	5	6
172	6	6	7	6	5	6	6	5	7	7	7	7	5	6	5	6	6
173	6	6	7	6	5	6	6	6	7	7	7	7	5	5	6	6	6
174	6	6	7	6	5	5	6	6	7	7	7	7	5	5	5	6	6
175	6	6	6	6	5	6	6	6	6	7	7	7	5	6	6	5	6
176	6	6	6	6	5	6	6	6	6	6	6	6	5	5	6	6	6
177	6	6	7	5	4	5	5	6	6	7	6	6	6	6	6	6	6
178	5	5	6	6	5	5	6	6	6	6	6	6	5	5	6	6	5
179	6	5	6	6	5	5	6	5	6	6	7	6	5	6	6	5	6
180	4	6	6	6	5	5	6	5	6	6	6	6	5	6	5	6	4



Report No.: BLC1906012E-J

3. Test Equipment

Equipment Name	Model No.	Serial No.	Next Calibration Date
Goniophotometric System	GPM-3000	DYHXF120001	2020-01-14
AC Power Source	CHP-500C	N/A	2020-01-13
Total Luminous Flux Standard Lamp	24V/150W	DYJYR040040	2020-01-21
Digital Power Meter	WT500	DYDWQ200006	2020-01-13
Integral Sphere (2M)	2M	DYJCE120067	2020-01-14
Digital Power Meter	WT500	DYDWQ200006	2020-01-13
Optical Color and Electrical Measurement System	CMS-3000S	DYJCE120067	2020-01-14

Expand Uncertainty:
Photometric Measurement (Sphere): 2.08%, k=2
Chromaticity Measurement(Sphere):25.6K, k=2
Photometric Measurement(Goniophotometer):2.654%, k=2

***** END OF REPORT *****