

LEDone®

LOC-T52FT-12W50K-SGFD YM Type A+B Installation Guide

SAFETY INSTRUCTIONS: Read instructions carefully before attempting to install fixture.

- **WARNING:** You **MUST** check the ballast compatibility list before installing with ballast Type A.
- **WARNING:** Risk of fire or electric shock. LED tube installation requires knowledge of luminaires electrical systems. If not qualified, do NOT attempt installation. All wiring should be performed by a qualified electrician.
- **WARNING:** Disconnect power before installing or servicing. This fixture must be wired in accordance with the National Electrical Code and applicable local codes and ordinances.
- **WARNING:** Make certain power is OFF before installing or maintaining fixture. No user serviceable parts inside.
- **WARNING:** **ONLY** compatible with LED One dimmer.
- **WARNING:** Disconnect the power to avoid shock when the equipment is wet.
- **WARNING:** Check the ballast compatibility list before installing this tube to the fixtures with electronic ballast. Do NOT install this kit to the fixture if the ballast is not on the list. If the ballast is not on the list, bypass the ballast or confirm with the supplier.
- **WARNING:** If the tube is installed as Type B (bypass), the fixture will no longer operate fluorescent lamps.
- **WARNING:** Install this kit only in luminaires that have the construction features and dimensions shown in the photographs and/or drawings and where the input rating of the retrofit kit does not exceed the input rating of the luminaire.
- **WARNING:** Do NOT make or alter any open holes in an enclosure of wiring or electrical components during kit installation.
- **WARNING:** To prevent wiring damage or abrasion, do NOT expose wiring to edges of sheet metal or other sharp objects.
- **WARNING:** This LED tube is accepted as a component of a luminaire where the suitability of the combination shall be determined by authorities having jurisdiction.

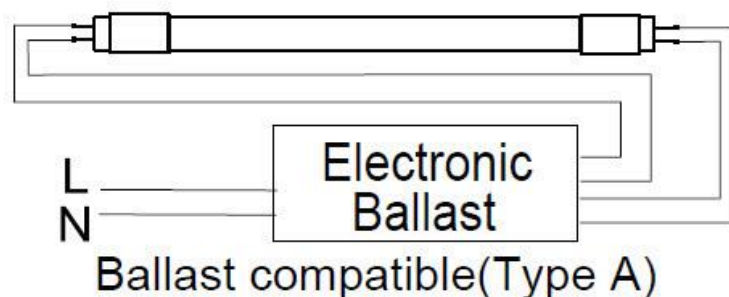
CLEANING & MAINTENANCE:

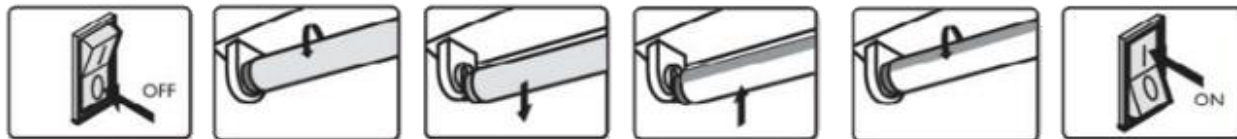
CAUTION: Be sure the fixture temperature is cool enough to touch. Do NOT clean or maintain while the fixture is energized.

1. Clean lens with non-abrasive cleaning solution.
2. Do NOT open fixture to clean the LED. Do NOT touch the LED.

Note: These instructions do not cover all details or variation in equipment, nor do they provide for every possible situation during installation, operation or maintenance.

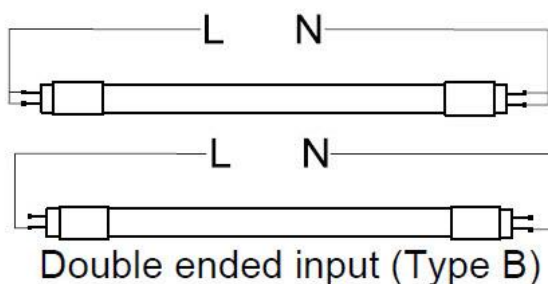
INSTALLATION TYPE A: You **MUST** check the ballast compatibility list before installing with ballast Type A.





1. Disconnect power of luminaire.
2. Remove existing tube lamp(s).
 - a. Remove diffuser (if provided)
 - b. Remove existing fluorescent lamp(s)
3. Check Ballast Compatibility list
4. Install the LED tube(s).
 - a. Read the label on the LED tube to ensure the power end of LED is aligned with powered tube socket. Then insert the LED lamp.
 - b. Replace troffer lens, if present.
 - c. After modification is completed, attach the replacement marking and cautionary label to a visible place on the luminaire and keep it visible after installation.
5. Restore the power of the luminaire.

INSTALLATION TYPE B: Note: The tube can ONLY work with double end power input.



Double Ended Input

Input voltage: 120-277V 50/60Hz

1. Disconnect power of luminaire.
2. Remove existing tube lamp(s).
 - a. Remove troffer (if present)
 - b. Remove existing fluorescent lamp(s)
 - c. Remove ballast cover (cover may be secured with screws or tabs)
3. Install the LED tube(s).
 - a. Read the label on the LED tube to ensure the power end of LED is aligned with powered tube socket. Then insert the LED lamp by sliding the pins into the sockets and rotating a quarter turn until the LED tube locks in place.
 - b. Replace troffer lens, if present.
 - c. After modification is completed, attach the replacement marking and cautionary label to a visible place on the luminaire and keep it visible after installation.
4. Restore the power of the luminaire.

DIMMING DIAGRAM:

Warning: ONLY compatible with LED One dimmer.

