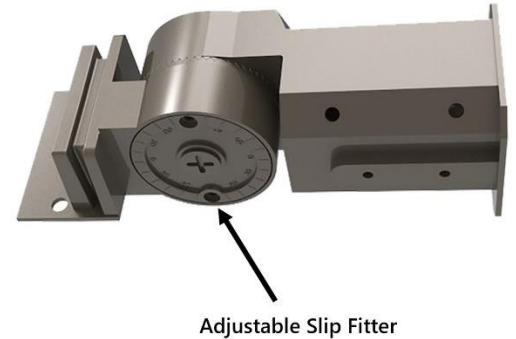
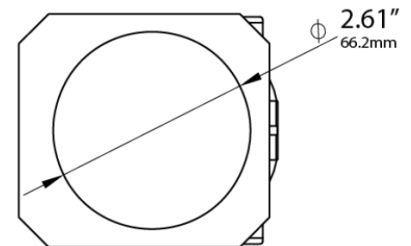
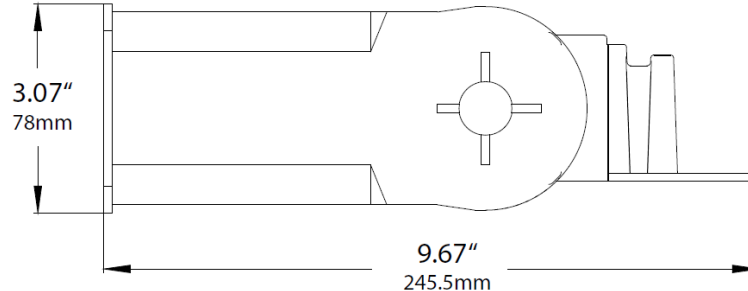
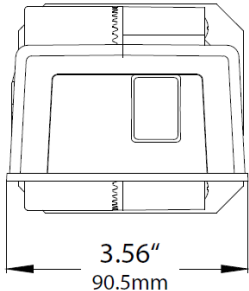


Adjustable Slip Fitter Mount for LOC-RGAL, LOC-SPAL & LOC-FL Series



MODEL	QUANTITY	WEIGHT	UPC CODE
Slip Fitter for LOC-RGAL, LOC-SPAL & LOC-FL	1	2.4 lbs	00815586025732

MEASUREMENTS



SLIP FITTER MOUNTING: Follow mounting directions as in Fig. 1

- The slip fitter mounting fits a 2 3/8" O.D. tenon. Place the slip fitter over the tenon and secure the fixture with the set screws (2) on the side of the slip fitter.
- Remove 2 screws on side of round cover plate. Remove the round cover plate and adjust the angle of the fixture.
- Loosen the locking bolt and swivel fixture to desired angle.
- Tighten the locking bolt and re-attach the round cover plate.

