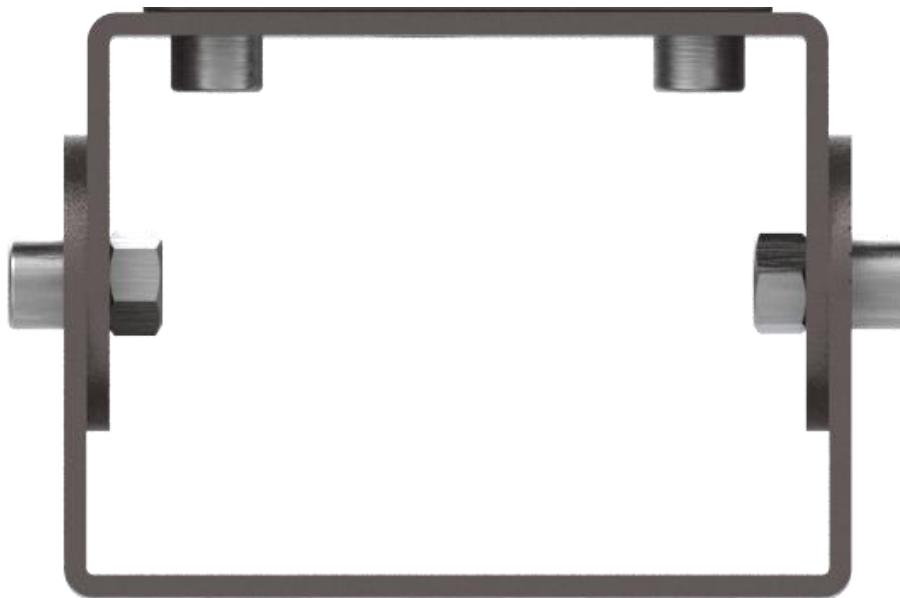
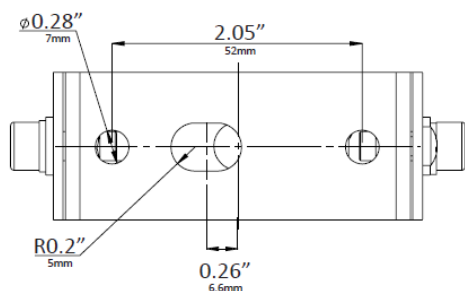
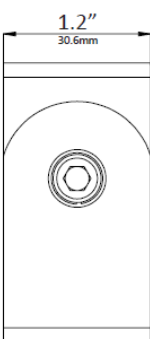
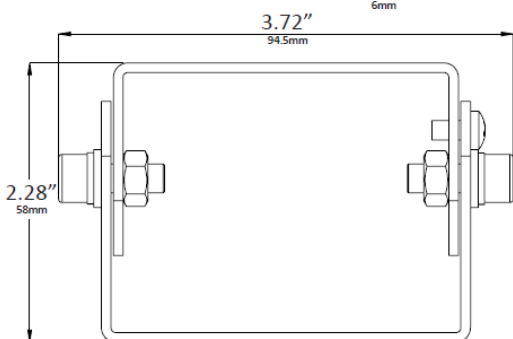
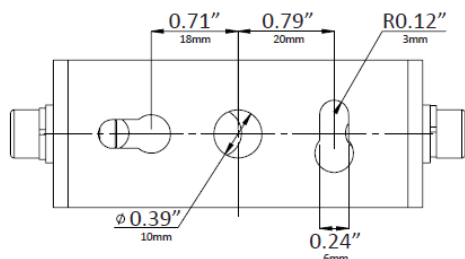


Trunnion Mount for LOC-FL-MW(15/25/35) & (35/50/60)



MODEL	QUANTITY	WEIGHT	UPC CODE
Trunnion for LOC-FL-MW(15W-60W)	1	lbs	00810050945479

MEASUREMENTS



Trunnion Mounting: (Use for the following models only: 15/25/35 & 35/50/60)

- Remove knuckle from fixture using 3/6" Allen wrench to remove two 1/2" 1/4-20 socket cap screws and carefully pull the knuckle off the cord.
- Thread the cord through the center hole in the upper section of the trunnion.
- Secure the trunnion to the housing with the socket cap screws.
- Tighten to minimum 2.2ft-lbs (3Nm) to maximum 2.5ft-lbs (3.5Nm). Mount fixture to the desired angle with 10#-24 bolts, lock washer and nut (not provided).
- To adjust the tilt angle of the fixture, use 3/16" Allen wrench to loosen the 1/4-20" socket cap screws on both sides of the trunnion. While holding the fixture in place, use a 9/64" cross screwdriver #8-32 cross recessed pan head machine screws. Adjust the desired angle and reinstall the set screw in the appropriate matching hole. Re-tighten screws to minimum 2.2ft-lbs (3Nm) to maximum 2.5ft-lbs(3.5Nm) to secure.