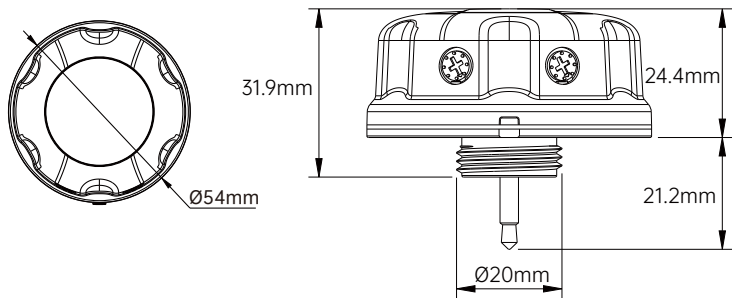




LOC-ACY-S-MWS-01-G1  
LOC-ACY-S-MWS-BT-01-G1



LOC-RC-WHITE-G1



LOC-ACY-S-MWS-01-G1  
LOC-ACY-S-MWS-BT-01-G1

## LOC-ACY-S-MWS-01-G1/LOC-ACY-S-MWS-BT-01-G1



- 15M/49ft Patent Protected Module, Effectively anti-interference.
- Rotator & Remote control, app control for BLE version.
- 12VDC Input, 0-10V Dimming, with Daylight Harvesting and Photocell Function.
- ONE for ALL Installations Parterning With Different Receptacles & Brackets.

## Parameters

Voltage Range	10-15VDC
Current	Remote control Versions: <30mA    APP Control Versions: <40mA
Frequency	5.8GHz±75MHz
Microwave Power	<0.3mW
Signal	DIM 0-10V
Detection Area	Remote Control: 25%/50%/75%/100%    Rotating switch: Default Setting 100%    APP Control Options: 25%/50%/75%/100%
Installation Height	15m/49.21ft Max.
Daylight Threshold	Remote Control: 2Lux/10Lux/30Lux/50Lux/80Lux/120Lux/200Lux/250Lux/300Lux/350Lux/400Lux/Disable Rotating switch: Default Setting Disable APP Control Options: 2Lux/10Lux/30Lux/50Lux/80Lux/120Lux/200Lux/250Lux/300Lux/350Lux/400Lux/Disable
Working Temp	-40°C~+70°C
IP Rating	IP65

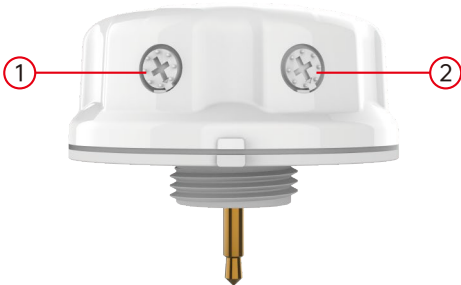
Default Program: Detection Area -100%, Holdtime - 5MIN, Daylight Threshold - 50lux, Standby Period - 60min, Standby Dimming Level - 30%

## Dial Rotator Function (Non Bluetooth Model Only)

LOC-ACY-S-MWS-01-G1 Regular Version

- ① Holdtime  
5s/1min/5min/10min

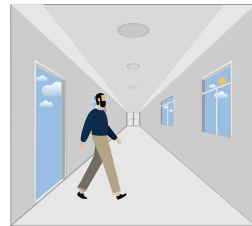
- ② Standby Dimming Level  
0%/10%/30%/50%



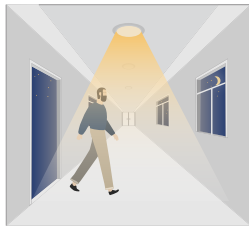
Detection Area	Daylight Threshold	Standby Period
Default 100%	Default Disable	Default as +∞ infinite with specific standby dim level.

\*Please note the regular version is remote control supported;  
the sensor memorizes the last-time setting.

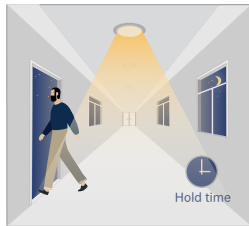
## With Daylight Threshold



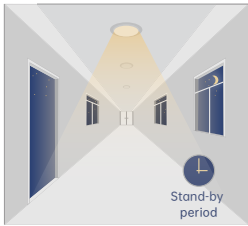
With sufficient daylight, the sensor keeps light OFF even motion gets detected



With insufficient daylight, the sensor turns light ON when motion gets detected



After there's no motion detected, the sensor keeps light ON 100% for holdtime.



After holdtime, sensor dims light to standby dimming level for standby period. if the standby period has been set as Os, sensor turns light OFF automatically after holdtime.



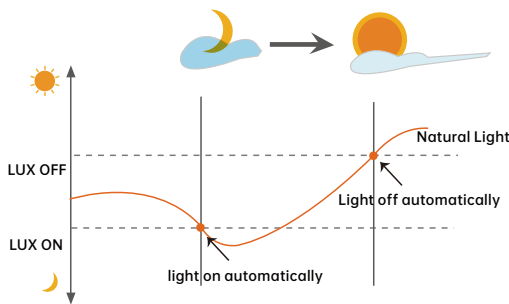
The sensor turns OFF light automatically after the standby period when there's no motion detected.

## Dusk/Dawn function

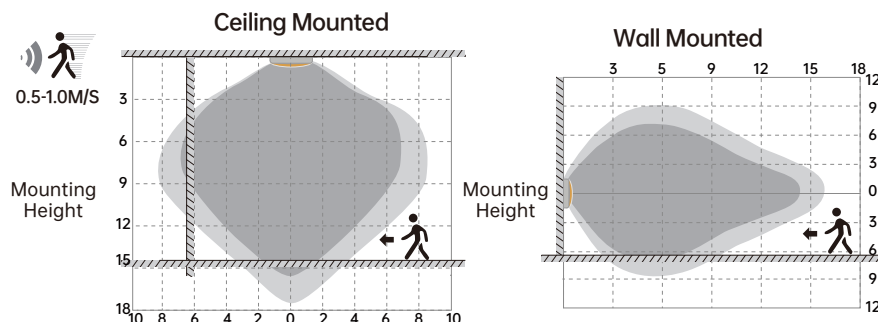
LOC-ACY-S-MWS-01-G1/LOC-ACY-S-MWS-BT-01-G1 is able to differentiate artificial light brightness from natural light after installed inside the fixture, and automatically turn off light when ambient brightness exceeds preset lux level.

## Precondition of Dusk/Dawn function:

1. Standby period is +∞;
2. Standby dimming level is on 10%,20% or 30%;
3. Daylight threshold is on 30lux/50lux/80lux/120lux/200Lux/250Lux/300Lux/350Lux/400Lux



## Detection Coverage



Highest mounting height is 15m

This figure indicates the maximum distance at the highest mounting height with 100% sensitivity.

Well Detected Area    Possibly Detected Area

## Model Information

Model Number	Sensor Type	Connector	Controller
LOC-ACY-S-MWS-01-G1	Microwave	Audio Jack	Remote Control LOC-RC-WHITE-G1
LOC-ACY-S-MWS-BT-01-G1			APP